

LEBANON HOUSE

London Borough of Croydon | Supported / Semi-Independent Living Accommodation



ABOUT THIS HOME

Lebanon House is a high-quality secured 3 bedrooms supported / semi-independent living service that welcomes young persons and adults with Learning Disabilities, Autism Spectrum, Behaviour that may challenge and Mental Health Conditions.

This home offers a tailored service to each individual with a person-centered planning approach that aims to provide the best specialist care to each person supported.

This home is fully furnished, adequately staffed, and well managed provision situated in Croydon. Our provision is managed by well-trained, highly experienced staff team, who are on site 24 hours a day.

The home has been refurbished so that our individuals can make the most of homely comforts, in privacy or in social environments.

The home has access to a huge number of community-based activities, education services and programmes.

WHO WE SUPPORT

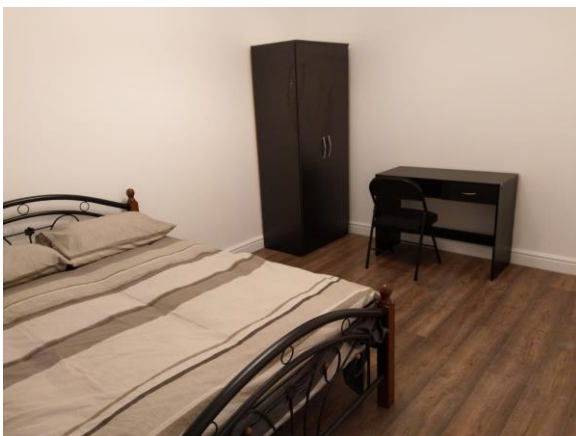
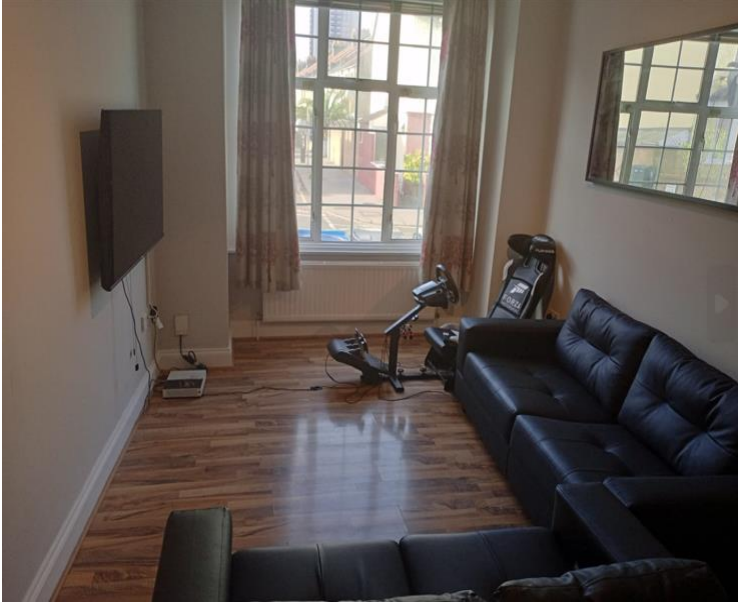
- Young persons 18+
- Adults
- Learning Disabilities
- Autism Spectrum Conditions
- Behaviour that may challenge
- Mental Health Conditions

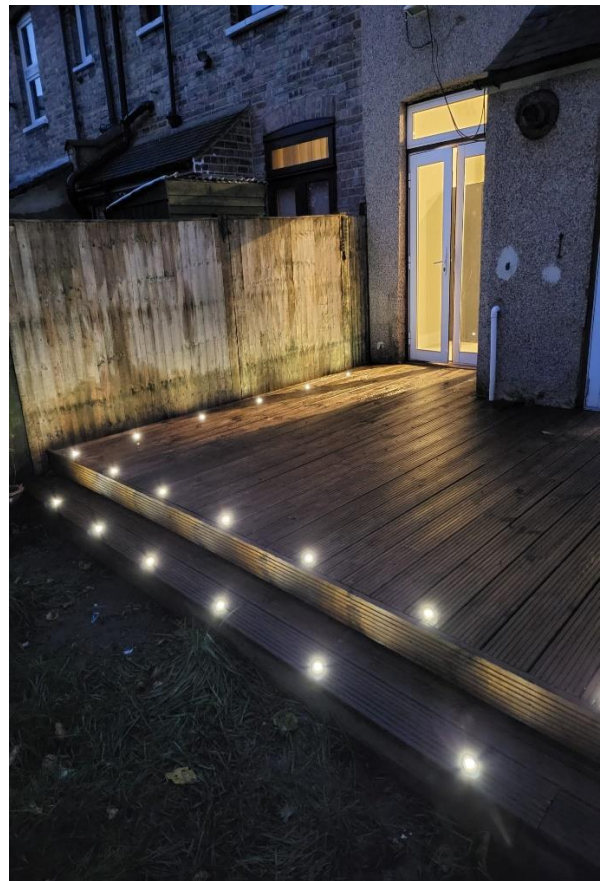
FACILITIES

- 3 Bedrooms
- En-Suite
- Bathroom
- Internet Access
- Large Communal Area
- Open Plan Kitchen
- Garden
- Off-street Parking
- 24-Hours CCTV and Alarm

SERVICE AIMS

Our services are modern, bright and comfortable, offering homely accommodation and living environments, in shared properties in the community.





KEY FEATURES

Lebanon House affords access to a huge number of community-based activities, education services and programmes. We can provide Supported Living packages tailored to requirements from single to shared living.

If you choose support by Myrtle Healthcare staff, you can rest assured that we have a team experienced and skilled in providing high-quality support to individuals with moderate to severe learning disabilities, autistic spectrum and behaviour that may challenge and mental health conditions.

In addition to support, we also work closely with Multi-Disciplinary Teams (MDTs), and the Local Authority's health and social care professionals to ensure your physical and emotional needs are met.

WHAT WE OFFER

This secure 3-bedroom accommodation, with single occupier rooms, each fully furnished with the following items: double bed, wardrobe, chest of drawers, and a bedside stool. Each of our rooms also comes with a smart television and 24-hour internet / WiFi access. It has an ensuite, 1 bathroom and shower shared between the other bedrooms and a visitor's toilet. The home also features a kitchen/diner room, living room, utility area and a small garden.

The home is well-situated in a quiet residential area in Lebanon Road, Croydon close to Lebanon Road Tram station with very good transport links to London. Nearby is Box Park, Whitgift and Centrale Shopping Centre.

LIFESTYLE

The home is situated within 5 minutes' walk to the train station, bus ride from the town's retail facilities, leisure centre, and more. The activities in the home are tailored around each individual's hobbies and interests.

The service offers a mix of community-based activities and in-home activities that support people supported in developing life skills including painting, pottery, martial arts, cooking, cleaning and more.

CONTACT US

Please call us on 07743 558 231 or 0203 869 2455 to find out more information about this home.

For the latest information and vacancy details, view online
<https://www.myrtlehealthcare.co.uk/location/lebanon-house-croydon>